

Illustration by Megan Carlée,  
2006 Art Poster Contest Winner



- Domestic Violence and Sexual Assault Services
- Strategies to End Gender-Based Violence
- Crime Victims Services

**FORMERLY ROCKLAND FAMILY SHELTER**

2012  
annual report

## Carolyn's Message



**Carolyn Fish,  
Executive Director**

Reflecting back on 2012, I see a year of change, celebration, loss, challenges, and continued growth in our work by our dedicated staff, board and volunteers on behalf of survivors of domestic violence, sexual assault and other crimes.

Our celebrations were many, not the least of which was honoring our dear friend and supporter, Gloria Steinem, with our 2012 Distinguished Citizen Award. Our most devastating loss was our dear colleague, mentor and friend, Lynn Sheinkin, in August of 2012. We have honored her memory by renaming the program she led for so many years, the *Lynn Sheinkin Department for Education and Social Change*.

Like most years, the challenges we faced were many and varied. Possibly the most difficult has been the continuing reduction in financial support from all levels of government—federal, state and local—as they deal with their own fiscal crises. In response, we are seeking to generate more private support for our programs as we continue to expand our fundraising and seek new partners for some of our programs and services. I thank all of you who have responded so generously to our annual appeals, and ask that you stay with us and help us weather this latest budgetary challenge in 2013.

Another significant change we experienced was the completion of Michael Mandel's two-terms as President of our Board of Directors. When Michael first became involved with the Rockland Family Shelter, he began what would become almost a second career as an activist, volunteer, and leader. From the time he joined the Board in 2003, he made meaningful contributions and in 2008, assumed the Presidency. His almost daily involvement with the agency and its programs was both inspiring and productive, as he sought new donors, recruited new Board and Advisory Council members, led the drive to buy our building and to change our name to the Center for Safety & Change and devoted many hours to our Student Activists Ending Dating Abuse (SAEDA) program.

On behalf of the Center staff, the Board, Advisory Council, and the thousands of women and children we have served during his tenure, I extend my warmest wishes to Michael and I look forward to the new contributions he will be making to the Center as we continue to mature in our mission of ending gender-based violence once and for all.

I want to welcome Rich Rein as our new President, Cindy McMurtrie as our new Vice-President, John Manna and Lisa Hays as Co-Treasurers and Billie Cronin as returning Secretary. We are facing many challenges, but experience has shown me that our vision; strength; strong clear leadership; professional staff; and the support of our community will get us through these challenging times. ***We must—the lives of thousands of women, children and families in our community depend on our continued success.***

## 2012 Highlights

**In addition to providing emergency shelter, the daily hotlines answered, advocacies, accompaniments, safety planning, counseling, providing information and referrals, legal services and assisting crime victims, through our programs and services, these are some of the events that stood out to us.**

- Launched ***Paws for Safety***, a program which takes clients' pets into foster care until clients are able to take care of their animals again.
- Started ***Connecting the Dots***, a 6 week support group for parents of sexually abused children, in collaboration with the partner agencies at the **Spirit of Rockland Special Victims Center**.
- Featured author, ***Vicki Crompton*** at our annual Stop F.E.A.R. Conference, co-sponsored by **Verizon Wireless, Rockland Police Chief's Association** and the **District Attorney's Office**. Vicki, whose teen-aged daughter was murdered by her abusive boyfriend, spoke to a full audience of criminal justice and community representatives at RCC, followed by a panel discussion about preventing and addressing teen dating violence.
- Co-hosted, ***The Yellow Dress***, at the JCC; a one-woman play about a girl who was verbally and physically abused by her boyfriend and which raises awareness about the issue of domestic violence. Generously sponsored by **Atlantic Tomorrow**.
- Provided a presentation to day laborers at the ***Jornaleros Project***. Over 20 men were trained on intimate partner violence, sexual assault, consent and masculinity.
- Partnered with **Rockland Community College** and the **Jewish Heritage Month Committee** to present ***Flowers Aren't Enough***, a play by Naomi Ackerman about a woman with an abusive partner. The play was followed by a panel discussion.
- Partnered with **St. Thomas Aquinas College** for the second annual ***STAC Owns the Night*** awareness event.
- Provided training to nursing students at Dominican College and Rockland Community College on the ***Sexual Assault Forensic Examiner Program (SAFE)***.
- Sponsored ***Spring Valley Leaders of Tomorrow***, attended by a core group of 10 students per month, providing them with skills to help them make healthy decisions in all areas of their lives.
- Held successive trainings by **Joe Ehrmann** and **K.C. Wagner** to address domestic violence in the workplace, generously sponsored by **KeyBank**.







REDC Award  
 Back L-R: Elizabeth Santiago, Julika Stackelberg, Jan Deegan, Arlene Gordon, Melissa Almenas, Marlene Rodriguez; Front L-R: Venesia Defrank, Rich Rein, Carolyn Fish, Kiera Pollock, Kavita Kunte



Erin Scott, Art Poster Winner

## Awards & New Appointments

- In February, Rockland Family Shelter received the award for the largest non-profit campaign increase by the **United Way**.
- In November, the Center for Safety & Change received the **Service Provider of the Year Award** from the **Rockland Economic Development Council (REDC)**.
- Executive Director, **Carolyn Fish**, received the **Camp Venture Sorority of Women Award**.
- **Erin Scott** won the 2012 Art Poster Contest, created by **Tracey Brosnan, Esq. of Mandel, Katz & Brosnan LLP**, to engage students in raising awareness of violence against women and girls. We thank Tracy and MKB for their continued support of this project.
- In December, the **Rockland Development Council** honored long-time board member, former board president and volunteer **Cynthia Diamond** as the *Volunteer of the Year* and Executive Director, **Carolyn Fish** as *Non-Profit Professional of the year*.
- Deputy Executive Director of Administration, **Elizabeth Santiago**, was appointed to the **NYS Domestic Violence Fatality Review Team**.
- Director of the Law Project, **Julie Gamache**, was elected to the Board of the **NYS Coalition Against Domestic Violence (NYSCADV)**.
- Director of Development, **Julika von Stackelberg-Addo**, received the **40 Under 40 Award** of the **Rockland Economic**



Cynthia Diamond and Carolyn Fish

DELTA Workplace Training with Joe Ehrmann, sponsored by KeyBank

## Michael's Message



**Michael Mandel, Out-going Board President**

This year marks the completion of my two-term, four-year presidency of the Center for Safety & Change's Board of Directors. Much has changed since I was nominated to be President in 2008, and much has not. Among the changes of which I am most proud are our move into our new building, and our change of name from Rockland Family Shelter to Center for Safety & Change. Both were long overdue.

Many of you will remember our cramped, rundown space over a (pungent) luncheonette on Main Street in New City. We had a business requiring 10,000 square feet of space operating out of 2,300 square feet and our rent was not reflective of the poor conditions. Our new building has provided a welcome respite for our staff and clients, and has allowed us to engage with the community in new and improved ways, including through our Women's Center and conference facilities.

The second dramatic change was our name change, which had been on the minds of our Board and staff for years. While the name "Rockland Family Shelter" reflected our history – in 1979 we opened the first and only shelter for survivors of domestic violence in Rockland County – it was not broad enough to encompass either the full panoply of services that we provide today, or those we hope to provide in the future. Most importantly, the name did not convey the breadth of those services to our potential clients: victims of domestic violence, sexual assault and other crimes.

Looking at what has not changed since my presidency began, two things stand out as well. The first of course is the need for our services. The issue of violence against women in all forms is as acute today as it was in 2008, and the systems that support such violence remain complicit in it. And this is true on the local, national and international level. The second thing that has not changed is the governmental response to violence against women. In my experience, the "financial crisis" has become more of an excuse for, rather than the cause of, local, state and federal government's reduced funding and draconian oversight of domestic violence programs.

Finally, though my presidency has come to an end, my involvement with Center for Safety & Change has not. I remain on the Board and have increased my commitment to our teen programs and other prevention efforts, as well as to our funding and budget as we try to cope with and survive the seemingly never-ending budgetary cuts to our programs and services.

Thank you to all who have joined me in our struggles and successes over the last four years.

# Ellen's Story

In February 2012, Ellen\* frantically dialed the 24-hour Hotline number of the Center for Safety & Change. Ellen was scared for her life and the life of her three school-aged children. Her husband's abuse and controlling behaviors were escalating, and lately he had been threatening that if she tried to leave the relationship she would never see her children again.

The sexual assault which she endured that evening was literally the last straw for Ellen. She made the decision to leave her husband and their home with her three children.

Ellen knew what to do next. Over the course of several months, she had secretly been in touch with an **advocate** at the Center for Safety & Change. She and her advocate had worked to craft a **safety plan**, which included a strategy for the day when Ellen would make the decision to leave. Ellen grabbed the pre-packed bags she had left in a disguised place, containing important documents and personal essentials for herself and the children, called the **hotline** one more time, and asked to be brought to the **Emergency Shelter**.

Once in a safe setting, Ellen and her children received an array of supportive services from the staff, who helped them take their first

tentative steps toward safety.

Through individual **counseling** and therapy sessions provided by the staff therapist at the Center's **Sexual Trauma Program**, Ellen began to deal with the trauma of years of emotional, physical and sexual abuse. Advocates at the Shelter also helped Ellen with referrals for medical care and assistance with **crime victims' benefits applications** and other resources. In a coordinated effort to provide consistency and support to the family, the Center's Director of **Children's Services** met with the children and the school counselor, the principal and the children's teachers.

Women with children who leave their abuser often face a myriad of legal concerns. Ellen was able to meet with one of the **attorneys** on staff at the Center, who specialize in assisting battered women in navigating the legal

system. After a free

**consultation** at

the Center's **Mary Weingard Domestic Violence Law Project**, a staff attorney represented her in Family Court proceedings, where she obtained an **Order of Protection** against her husband and eventually gained **custody of her children**, as well as an order of child and spousal support. The family was slowly beginning to see new opportunities for their lives again.

While in shelter, Ellen and her children had time to evaluate and think about their options. With some mentoring from members of the Center's **Resource Council** of survivors of domestic violence and sexual assault, the family began to form a viable foundation for their new lives and eventually, they were ready to make the **transition** from the emergency shelter. Advocates on staff helped Ellen to locate affordable housing and assisted in obtaining furniture and the most important household items.

Ellen and her children continue to receive services at our **walk-in main office**. All three children are doing well in school and Ellen is finally beginning to

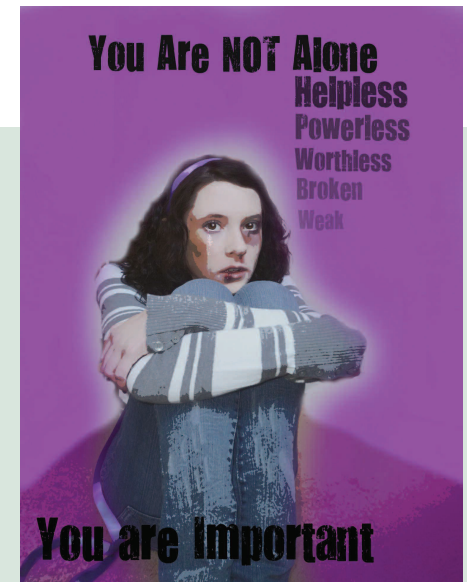


Illustration by Julia Serano  
2011 Art Poster Contest Winner



Art project by the Children's Program  
at the Emergency Shelter

\*Name and circumstances have been slightly changed to protect the client's identity.





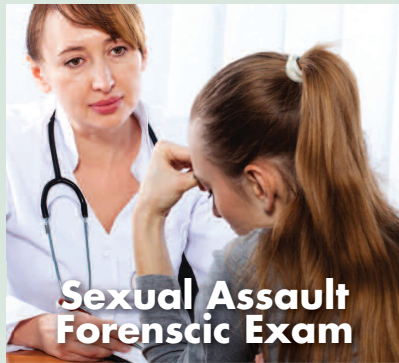
**24-Hour Hotline**



**Advocates**



**Emergency Shelter**



**Sexual Assault Forensic Exam**



**Legal Services**



**Children's Services**



**Resource Council**



**SAEDA**

**At the Center for Safety & Change, we meet hundreds of families like Ellen's each year, everyone's story is a bit different, but often there are many similarities.**

Our clients often find strength and comfort through the culturally sensitive Support and Empowerment Groups the Center offers in multiple languages. Our advocates help them navigate their legal options; access medical services; find housing; discuss and pursue employment opportunities; and sometimes just provide a listening ear during this difficult time.

Through the Center's violence prevention programs, the DELTA Workplace trainings, the school-based Teen Dating Violence Prevention Program (TDVPP) and the non-school-based SAEDA training (Student Activists Ending Dating Abuse), we implement strategies to ultimately reduce the need for the services families like Ellen's received. Imagine a world free from violence!

The Center for Safety & Change could not provide all of these life-changing and lifesaving programs without the help from caring individuals like you. **Thank you for helping us fulfill our mission** to offer services and support that promote the safety for women and children while challenging and changing the social systems that tolerate and perpetuate violence and oppression against women and others who are oppressed.



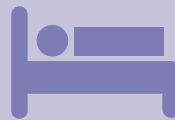
# 2012 Impact Summary

## Emergency Shelter

While in shelter, advocates provided nearly **595** accompaniments, **2,440** advocacies and developed, reviewed and refined the residents' safety plans **347** times. Shelter staff also provided information and referrals **2,805** times and provided nearly **12,833** units of direct service to the shelter residents, including counseling, child care, transportation, translation and other services.



**46** **44**  
Women Children



**4,720**  
Bed Nights

## Non-Residential Domestic Violence Services

Non-residential advocates worked with approximately **300** families each month and developed **2,332** safety plans for victims of intimate partner violence and abuse. **3,568** advocacies were provided along with **1,126** accompaniments. Information and referrals were provided **8,641** times. A total of **16,392** units of direct service, including counseling, child care, transportation, translation and other services were provided.



## Children's Services

Through the Safe Parents/Safe Kids program, a collaboration with Rockland County Child Protective Services, Center for Safety & Change worked with **89** families **335** times. Center staff also collaborated with VCS to co-facilitate a mother's support group in Spanish on a regular basis, which was attended by a total of **189** women.

Staff and volunteers answered a total of **1,692** Hotline

## Sexual Trauma Services

Advocates in the Sexual Trauma Department served **277** survivors of sexual assault **2,355** times and provided them with over **3,209** direct service units, including crisis intervention, supportive counseling and therapy. Survivors of sexual assault were provided with over **1,000** information and referrals; and nearly **650** advocacies and **220** accompaniments.

**52**

Sexual Assault Forensic Exams were performed by Center for Safety & Change nurses at both local hospitals

*Thank you from the bottom of my heart for all your advice, kindness and support during this time. I've been so grateful for everything since the night this nightmare began for me and my two precious innocent children. I cannot see what the future holds for us at the moment, but I am optimistic because of you.*

— intimate partner violence survivor



## Comprehensive Crime Victims Services

The victims of crimes and their families received over **800** units of direct service, including counseling, transportation, translation and other services along with **218** information and referrals and **74** advocacies.

## Mary Weingard Domestic Violence Law Project



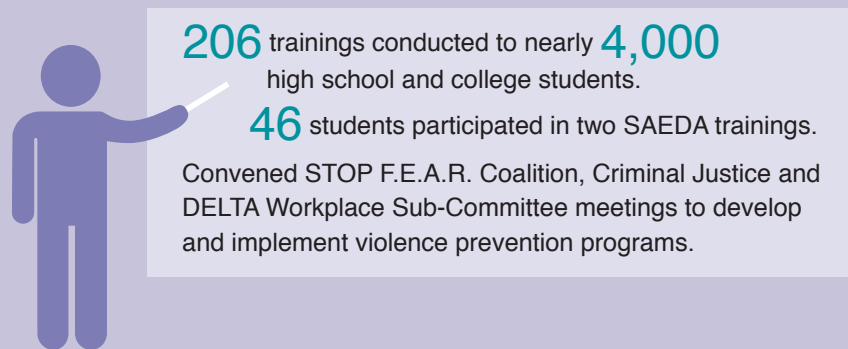
Survivors of domestic violence benefited from **316** free legal consultations by staff attorneys **2,096** times, which included **155** new client consultations. **86** domestic violence clients were represented in Rockland County. **160** cases were litigated for custody and visitation, as well as orders of protection.

## Community Outreach

**539** community presentations, including radio, TV and print media publications and community presentations reached over **16,000** people about intimate partner violence, sexual assault and strategies to end gender-based violence. Center for Safety & Change staff attended over **100** community events.

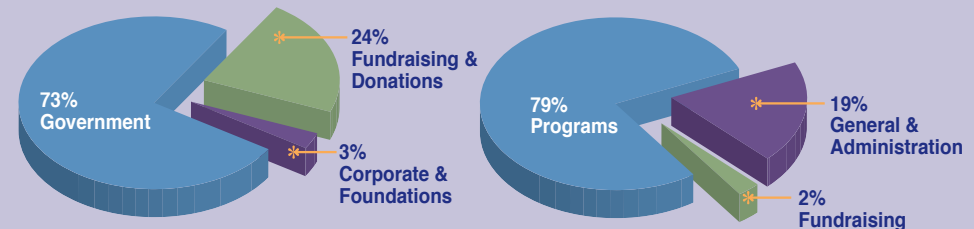
**Volunteers**  
contributed **11,278** hours of service

## Lynn Sheinkin Department for Education & Social Change



2012 Revenue	
\$2,137,508	Government
\$84,681	Corporate & Foundations
\$720,772	Donations & Fundraising
<b>\$2,942,961</b>	<b>TOTAL</b>

2012 Expenses	
\$2,484,504	Program
\$595,459	General & Administration
\$80,429	Fundraising
<b>\$3,160,392</b>	<b>TOTAL</b>



*The Center for Safety & Change has helped me in so many ways with the struggles, learning how to overcome and deal with them in everyday life. The services helped me in the process and to understand what I had faced in an abusive marriage. This place has helped me so much and helped me gain my self-confidence back.*

— sexual trauma survivor



# Thank You

Thanks to our generous donors and sponsors, the Center for Safety & Change was able to reach many of our goals for 2012.

Thank you also to our **event sponsors**, the **individuals**, **businesses** and **organizations** who supported the Center in 2012 through grants, donations and gifts in-kind – we couldn't have continued our life affirming services without your support.

**A special thank you** to each chairperson of our special fundraising events in 2012. Without their dedication and commitment to end gender-based violence, we could not have served nearly 300 survivors of domestic violence and sexual assault each month, or developed and implemented strategies that end gender-based violence.

- Laura Segall & Elisabeth Voigt**, *Co-Chairs of the Development Committee*
- Kimberly Campbell & Cindy McMurtrie**, *Distinguished Citizen Award Dinner*
- Lisa Hayes & Deborah Kingsley**, *Distinguished Citizen Award Dinner Journal*
- Cynthia Diamond, Debbie Lurie, Diane Sussman & Roberta Zahl**, *Designer Fashion Sale*
- Janet Brooks & Skye Spiegel**, *Fashion Sale Preview*
- Billie Cronin, Kara Katz & Larry Wolf**, *Women's Distance Festival 5K*
- Ronnie Drachman & John J. Manna, Jr.**, *Harvest Auction*
- Bijal Jani & Richard Rein**, *Simona and Jerome A. Chazen Business Award Luncheon*
- Billie Cronin & Cynthia Diamond**, *Barnes & Noble Gift Wrap*
- Jill Kaliff**, *Better Things to Come* cookbook



## SPECIAL THANK YOU TO:

- Our Year-End Appeal Chair, actor **Sigourney Weaver**
- Our rape crisis and direct service **hotline counselors and volunteers**, whose dedication and enthusiasm provide tremendous support throughout the year.
- The members of our **Resource Council**, a group of domestic violence and sexual assault survivors who meet monthly to advise the Center and actively participate in the movement to end gender-based violence. Members review Center policies, educate legislators, and raise awareness and funds for the Center in our community.
- The **Palisades Center Mall**, for continuously providing space for our SAEDA trainings.
- Commissioner **Sue Sherwood**, District Attorney **Thomas Zugibe** and the **Village of Spring Valley** for their continued efforts in supporting Center for Safety & Change programs and services.



### GOVERNMENT

#### Federal

Centers for Disease Control - *through the New York State Coalition Against Domestic Violence (NYSCADV)*  
 Federal Emergency Management Agency - *through the United Way of Rockland*  
 Federal Family Violence Prevention Act  
 Office of Violence Against Women - *through the Village of Spring Valley*  
 US Recovery Act Fund

#### New York State

Office of Victims Services  
 Office of Children and Family Services  
 Division of Criminal Justice Services  
 Department of Health

#### State Coalitions

Coalition Against Domestic Violence (NYSCADV)  
 Division of Criminal Justice Services  
 Coalition Against Sexual Assault (NYSCASA)

#### Rockland County

Department of Probation  
 Department of Social Services  
 District Attorney's Office  
 The County of Rockland  
 The Office of Community Development  
 Youth Bureau

#### Towns & Villages

Ramapo  
 Spring Valley

### FOUNDATIONS

Avon Foundation  
 The Chazen Foundation  
 First Niagara Bank Foundation  
 Gerald A. Doering Foundation, Inc.  
 Glickenhau Foundation  
 Kurz Family Foundation, LTD.  
 The Ostberg Foundation  
 Prudential Foundation Matching Gifts  
 Rockland Community Foundation  
 Rockland Country Club Foundation  
 Wilbur G. Malcolm Foundation





*Pictured, L-R:  
Row 1: Bijal Jani, Ronnie Drachman, Cynthia McMurtrie; Kara Katz; John Manna; Janet Brooks, Anne Shapiro; Hannah Yablonsky, Alicia Yablonsky, Deborah Kingsley, Elisabeth Voigt; Roselyn Fields, Carolyn Fish*



*Row 2: Gloria Steinem; Rich Rein, Jill Kaliff; Cynthia Diamond, Debbie Lurie, Diane Sussman, Linda Anopolsky, Rikke Stone; Laura Segall; NY Senator David Carlucci; Susan Scalettar, Billie Cronin*



*Row 3: Maria Luisa Whittingham, Phyllis Frank; Chair of the Rockland County Legislature Harriet Cornell, Muriel Fox, Gloria Steinem; NY Assemblyman Kenneth Zebrowski; District Attorney Thomas Zugibe; Kimberly Campbell; Skye Spiegel; Larry Wolf*

**CORPORATE**

Active International  
Atlantic Tomorrow  
Beckerle Lumber Supply Co. Inc.  
BNY Mellon Wealth Management  
Braunfotel & Frendel, LLC  
Bubba's Bagels  
Campbell Fire Protection, Inc.  
Christopher Street Financial  
City Line Family Restaurant  
Clemente Orthodontics  
Community TechKnowledge, Inc.  
D. Anthony's Hair Studio, Inc.  
Dress Barn  
Dusty Rose, Inc.  
Eileen Fisher  
Ellis Sotheby's International Realty  
Feldstein & Stewart, LLP  
Fellows, Hymowitz, Epstein P.C.  
Global Protection Systems, Inc.  
Group M Public Relations, Inc.

HBO  
Hiep Sanitation  
Hudson House Of Nyack  
Innovative Plastics Corp.  
Kass & Jaffe  
Key Seminars  
KeyBank  
KPMG Community Giving Campaign  
Littler Mendelson, P.C.  
M&T Bank  
Major Energy Services  
Mandel, Katz & Brosnan LLP  
Maria Luisa Boutique  
Network & Security Technologies  
NY Jungle Salon, Inc.  
Nyack General Store  
Orange & Rockland Utilities  
Palisades Federal Credit Union  
Payserve Corporation  
Petrina's Place/Nyack Yoga Co-op

Pfizer  
Provident Bank  
Rand Commercial Services  
Riverwaves Salon  
Rockland Boulders  
Rockland Pediatric Dental, P.C.  
Safe Harbour Group Ltd.  
Santi Express, Inc.  
Shree Yoga Studios, LLC  
Slattery Moving & Storage  
Stone Barns Center for Food and Agriculture  
Studio 2  
The Byne Group, Inc.  
The Food Evolution  
Torsoe Brothers Construction Corp.  
Verizon Wireless  
Victoria's Secret  
Waldorf Derm & Laser

**COMMUNITY**

A Better Way  
Allstate Giving Campaign  
Alpha Kappa Alpha Sorority  
American Red Cross, Metro NY North Chapter  
Blue Knights Chapter NY XVIII  
BNY Mellon Community Partnership  
Bridge Club Women Who Care  
St. John The Divine  
Congers-Valley Cottage Rotary  
Congregation Sons of Israel  
First Presbyterian Church  
GE United Way Campaign  
Germonds Presbyterian Church  
Girl Scout Troop #40730  
Grace's Thrift Shop  
Greenbush Presbyterian Church  
Haverstraw Seniors  
IBM Employment Contribution  
JustGive

Medco Health Employee Giving Campaign  
Members Give  
Morgan Stanley Annual Appeal & Charitable Spending Programs  
Nanuet Hebrew Center  
National Council of Jewish Women  
Network for Good  
New City Jewish Center  
New York Heat Baseball  
Nyack First  
NYSBOC Rockland County Chapter  
Pearl River United Methodist Church  
Pfizer United Way Campaign  
Prince of Peace Lutheran Church  
Ramapo Lodge #485  
Riverkeeper  
Rockland Business Association  
Rockland Charity Duplicate Bridge Players  
Rockland County Young Democrats

Rockland Road Runners Association  
Sister Moon Goods  
Sisterhood of Congregation Shaarey Israel  
St. John's Episcopal Church  
St. Paul's Evangelical Lutheran Church  
St. Thomas Aquinas College  
Starfleet International  
Suffern United Methodist Women  
Tappan Zee Thrift Shop  
Temple Beth El  
Temple Beth Torah  
The Garden Club of Nyack  
The Safe House  
Travelers Community Connections  
Trinity Episcopal Church  
Truist  
United Church of Spring Valley  
United Methodist Women of New City  
United Way of Southeastern Pennsylvania





## Pictures From Our Fundraising Events



### INDIVIDUAL GIVING

Steven Abel & Paula Davis  
Beverly Abercrombie  
Lila & Herbert Abraham  
Nicole Abraham  
Mary & Paul Adler  
Adwaa Adu  
Nighat Afzal  
Julie Agoos  
Maureen Agosti  
Adrienne Alcaro  
Joy Alcaro  
Mary Jane Alexander  
Maia Allen  
Samira Allen  
Marianne & Glenn Allyn  
Mary Alston  
Pamela Ancowitz  
Rayla & Bill Anderson  
Norma Andrews  
Ann Angarola  
Maria Annunziata  
Linda & Martin  
Anopolsky  
Kristen Apalbo  
Virginia Hall-Apicella  
& Guy Apicella  
Frances Aquino  
Michele Armenante  
Natalie Armstrong  
Alisha & Saïd M.  
Armutcuoglu  
Myles Aronowitz  
Nelly Bly & Michael  
Arougheti  
Sandy & Ira Asherman  
Nadie Atisme  
Teresa Austin  
Eileen Bacchi  
Santiago Baez, Jr. & John Clark  
Joan & Donald Baggott  
Cathy Bailey  
Charles Baken  
Shelly J Baker  
Katherine Baldwin  
Joan Balfour  
Ms. Balletta  
Prabha Bansal  
Fran & Mark Barabell  
Eileen & Ameram  
Barkai  
Amy Barnett & Dan

Kaplan  
Lori Barth  
Joanna Barth-Werb  
Victoria Guarnieri & Anne Baumann  
Karen Beck & Mitchell Fink  
Ann Marie Becker  
Beverly & Stanley  
Becker  
Roberta Becker  
Joan Beers  
Lucille & Richard  
Behrens  
Ellen & Irwin Belitsky  
Anita & Jonathan Bell  
Betsy & Jeffrey  
Benjamin  
Any Berg  
Marjorie & Egon Berg  
Rochelle & Mike  
Berger  
Beth & Steven Berman  
Nancy Bernon  
Joyce Bernstein  
Kathleen Bernstein  
Phyllis & Albert  
Bernstein  
Richard Bernstein  
Drs. Joan & Daniel  
Berson  
Lori & Fred Bethon  
Cristina Biaggi  
Linda Bianco  
Cathy S. Boerke  
Myra M. Bograd  
Patricia & Ken Boland  
Courtney Boniface  
Kathy & Robert  
Bookman  
Sally & Charles  
Borgman  
Lynda Borno  
Henry Bornstein  
Susan & Jerry  
Borststein  
Ana Arango Bossard  
Jane & John Bove  
Rita Boyd  
Lorraine Bracco  
Elizabeth Bracken  
Dorothy & Tim Brady  
Susan & Eric Brand  
Julia Breer

Arlene & Dr. Robert  
Brenner  
Dr. Rochelle Brief & Dr. Paul Brief  
Estelle Brill  
Jenny Broderick  
Alisa Brooks  
Janet Brooks  
Darlene Brossach  
Alma Brown  
Nancy A. Houghton & Howard H. Brown  
Sondra & George  
Brucks  
Alicia Buczek  
Julie Buffington  
Michelle Bulla  
Shane Gale Burd & Don Burd  
Isabel Burk  
E. Burns  
Kristina & Tom Burns  
Alexander Bursztein,  
Esq.  
Jill Buttermann  
Ann Byrne  
Jaime & Daniel Cague  
Toni Cahill  
Patricia Caldwell  
Mimi Calhoun & Dr.  
Howard Goldstein  
Spenta Cama  
Fran R. Camhy  
Laura G. Canby  
Evelynne Cantave  
Joseph Capasso  
Briquette Pasternak  
Carmichael & Philip  
Carmichael  
Kathleen Carroll  
Pat Carroll  
Melissa Cascio  
Bonnie Caul  
Lynn Centofanti  
Liz Ceravello  
Alma Cespon  
Maryalice & Leonard  
Chaifetz  
Nina Chaifetz  
Bonnie & Tom Chapin  
Elizabeth Chapman & William Munn  
Franca Charles  
Alex & Bill Chase  
Marilyn & David Chasin  
Simona & Jerry

Chazen  
Debra & Robert  
Cherofsky  
Barbara Chertok  
Anne & Michael  
Chesterman  
Jocelyn Chivers  
Yolanda Chinchilla  
Linda & Alan Chisholm  
Diane Churchill  
Phyllis & Dr. Mel Citrin  
Edward & Marie Clark  
Jessica & Allan Clark  
Susanne & C. Richard Clark  
Marilyn Cleveland & James Uleman  
MaryJane Clewely  
Ariene Clinkscale  
Karen Close  
Coral Cohen  
Eilyn & Dr. Daniel  
Cohen  
Evelyn Cohen  
Randi Cohen  
Sandra Cokerley  
Connie Coker & Dr. Erik Larsen  
Alice Collins  
Eileen Collins  
Jack Collins  
Deneise Connell  
Jean Marie Connolly & Mark Iannucci  
Judy Cooper  
Susan Cooper, Esq.  
Joelle Coq  
Hon. Harriet Cornell  
Gloria & James  
Costello  
Joanne Cote  
Alice & Louis  
Coulombre  
Jane & William  
Courtney  
Edward C. Coury  
John Coury  
Olive Crona  
Romina Crona  
Billie Cronin  
Pat & Jim Cropsey  
Barbara & Charles  
Cross  
Zara & Steve Crowley  
Lori Cuff  
Sharon Cuff

Laura Cullen  
Laure Cunningham  
Louise & Eugene  
Cuomo  
Myrna Curtis  
Nancy Cutler  
Sally & Thomas Daly  
Betty Daniels  
Wendy & Tom  
D'Arminio  
Janet Darrin  
Jan & Niles Davies  
Kathleen Davies  
Louise Durandisse  
Irene Durkin  
Kathie Eastin  
Oriel Eaton  
Jan Deegan  
Venesia Defrank  
Jill Degan & Dr. Jeffrey Degen  
Sandy & David Deitch  
Kathleen Delargy  
Teresa DelGiudice  
Carolyn & Peter  
deLisser  
Antoinette Delvecchio  
James Deminno, CPA  
Loren & Jeff DeNicola  
Judy & Bob D'Errico  
Cindy DeSisto  
Angela Nelson & William Deutsch  
Dana Devine  
Elizabeth Di Stefano  
Cynthia Diamond  
Shari & Seth Diamond  
Barbara & Dennis  
Dillon  
Katelyn Dilorenzo  
Rita Milner Dinkes & Marc Dinkes  
Donna Dinovelli  
Susan Dizzine  
Edward Doering & Jean Lara  
Amy Doliner  
Nils Olaf Dolven  
Michelle Domond  
Anna Domosi  
Nellie Donnelly  
Mary D'Onofrio  
Maura Donoghue  
Nancy Donoghue  
Lori Dorfman  
Maureen Dougher  
Karen & Scott Dow

Ronnie Drachman  
Nancy & Robert  
Drennen  
Wilhelmina & James Drumm  
Elaine Drumm  
Miriam & Dr. Martin  
Dubner  
Nicole DuBow  
Michel & Venante  
Ducuprin  
Deborah Dulaney  
Ellen Dulberger  
Louise Durandisse  
Irene Durkin  
Kathie Eastin  
Oriel Eaton  
Jan Deegan  
Venesia Defrank  
Jill Degan & Dr. Jeffrey Degen  
Sandy & David Deitch  
Kathleen Delargy  
Teresa DelGiudice  
Carolyn & Peter  
deLisser  
Antoinette Delvecchio  
James Deminno, CPA  
Loren & Jeff DeNicola  
Judy & Bob D'Errico  
Cindy DeSisto  
Angela Nelson & William Deutsch  
Dana Devine  
Elizabeth Di Stefano  
Cynthia Diamond  
Shari & Seth Diamond  
Barbara & Dennis  
Dillon  
Katelyn Dilorenzo  
Rita Milner Dinkes & Marc Dinkes  
Donna Dinovelli  
Susan Dizzine  
Edward Doering & Jean Lara  
Amy Doliner  
Nils Olaf Dolven  
Michelle Domond  
Anna Domosi  
Nellie Donnelly  
Mary D'Onofrio  
Maura Donoghue  
Nancy Donoghue  
Lori Dorfman  
Maureen Dougher  
Karen & Scott Dow

Maureen K. & Harvey  
Finkelstein  
Barbara & Dr. Philip Finn  
Carolyn Fish & Irv Fink  
Raselle & Dr. Edward  
Fisher  
Jill Fisher  
Linda Fitzpatrick  
Carol Fleischmann  
Bonnie Fleming  
Bonnie Fletcher  
Theresa Foresta  
Marsha & Gary Forman  
Muriel Fox  
Elinor France  
Marguerite Franck  
Phyllis B. Frank  
Ms. Freal  
Sondra Corey Freyler  
Hon. David Fried  
Susan Frieden  
Susan Frye  
Lynda & Kenneth Gach  
Judith & Paul Galan  
Julie Gamache  
Adele Garber  
Byron Rene Garcia  
Franklin & Harriet  
Gardner  
Jill Garland  
Rose Garrity  
Lynn Gartenberg  
Katherine Gartmann  
Katie Gartmann  
Maryann Genovese  
A. Germano  
Diana Gessel  
Arlene Giller  
Joanne P. Giordano  
Marian Giordano  
Marcia & Marty Glasser  
Georgina Glazer  
Michelle Gleesor  
Judith Glickman  
Sherry Glickman  
Kathy & Mike Gnazzo  
Robert Goldberg  
Dr. Gail Golden  
John Goldman  
Thomas Goldrick  
Linda & David Goldstein  
Judy Golland  
Rosario Gonzalez  
Lewis Goodfriend  
Janet Goodman  
Joanne Goodman &

Marion & Arthur  
Helltalner  
Christine Henderson & David Hazan  
Kim Hendrickson  
Carol Henry  
Wayne P. Henry  
Sylvia Wong Herscher  
Meryl & Roger Hirsch  
Sharon & Stephen  
Hittman  
Alison Hoffman  
Dehbir Hoffman  
Mimi & Lee Hoffman  
Christine Hofman  
Pat Hohfeld  
Margaret Holihan  
Ina & Fred Hollander  
Ellen B. Holtzman, Esq.  
Jeff Horowitz  
Beverly & Robert  
Houghton  
Joyce Bernstein & Howard Savitt  
Dr. Harriet Hudson & Rene Pacheco Arana  
Regina Hudson  
Rosa Hudson  
Victoria Hudson  
John Hughes & Kevin Carter  
Shirley Hulbert  
Laurie Hurdley  
Esther Hyman  
Carolyn Iannone-Fiorillo & Rocco Fiorillo  
Debra & Kenneth  
Isaacs  
Anna Ivara  
Maria Jackson  
Diana & Sheldon  
Jacobson  
Kathy Jaffe, LMSW  
Hon. Ellen Jaffee  
Gloria M. Janata & Hank Whitmore  
Bijal Jani, Esq.  
Marvin Joachim  
Carol Johnsen  
Miriam & Kenneth  
Johnson  
Marie Joseph  
Bella Joyce  
Gerald Jsak  
Linda Kagel  
Jill & David Kaliff

Elizabeth & Ed Kallen  
Katherine & Mitchell  
Kaplan  
Mukta Kapur  
Laurie & Walter  
Karpoczyc  
Debra Karten  
Marilyn Kaskel  
Julie Kaslens  
Julie Kassel  
Cheryl Katz  
Eleanor & Edward Katz  
Dr. Michele & Barry Katz  
Rena Katz  
Ann Kaufman  
Gerry Kaufman  
Drs. Aditya & Raman Kaul  
Terri & Mitchell Kayden  
Nadine & Leo Keegan  
Heather Kehler  
Alice Keller-Allig  
Irene Kelly  
Linda Kelly  
Nancy & John Kenney  
Rochelle Kepes & Maria Silverstein  
Rita & Ray Keywork  
Sonya Khalilzad  
Dorothea King  
Eileen T. King  
Sandra King  
Deborah Kingsley  
Alice & Lawrence  
Kintisch  
Roberta Klammer  
Patricia Klees  
Deborah & Thom  
Kleiner  
Bonnie Knapp  
Tiffany Kogen  
Barbara & Richard  
Kohlhausen  
Sally Kolinsky  
Helen Komar  
Susan & Isaac Kopec  
Karyn Korreich  
Helene & Ira Kornstein  
Gail & Alan Koss  
Kellyann Kostyal  
Iris & Aaron Kramer  
Tara Kramer  
Nenette Kress  
Theresa & George Krug  
May Krukliel

Florette Kupfer  
Janice & Dana  
Kurzweil  
Karen & Christopher  
Kyle  
Helga Larmarcho  
Eileen Landau  
Lauri Landau  
Arlene B. Lander  
Linda & Rodney  
Langdon  
Lisa deRiberre Larkin  
Beth & John Lauder  
Robin & Robert Lauffer  
Marilyn & Irving Lavin  
Marlene Lazar  
Sande & Gary  
Lefkowitz  
Lynda Legler  
Ellen & Steve Lehman  
Evelyn Leong & Mark Hussey  
Lisa Levar  
Irene Levin  
Ann Nordon & Hon. Bruce Levine  
Deborah & Ken Levine  
Ellen & Merritt Levine  
Marsha Levine  
Nicki Levine  
Arlene Levinson  
Rhonda & Bruce Levy  
Sarah Lewis  
Monica Liaroh  
Drs. Susan Levin-  
Liebergall & David A. Liebergall  
Dr. Rita Lieberman  
Helen Lipovsky  
Deborah Lipp  
Denise & Adam Lipson  
Jill & Ira Lipson  
Gail Lipton  
Patsy Lisak  
Genia Lisanti  
Rondi Kinete Loganzo,  
Esq.  
Esther Loiseau  
Tina Lombardoni  
Nancy Londin  
Rhonda & Martin Lonow  
Erika Louiz  
Hon. Nita M. Lowey  
Cassandra & Nick  
Ludington  
Edward Luisi

Mary Lukens  
Sheryl Santi Luks & Ted Luks  
Jeffrey Lunden  
Liane Lunden  
Debbie & Brian Lurie  
Karen Lynch  
Maureen C. Lynch  
Loraine Machlin  
Geraldine Mackinnon  
Alyssa Madden  
Heddy & Robert Magrill  
Lorraine Mahon  
Sheryl Malech  
Pat Malewich  
Louise Malus  
Laraine Mancini & Garrett Verage  
Reena Mancuso  
Joshua & Monica  
Mandel  
Dr. Linda Mandel  
Marianne Mandel  
Rabbi Nina Mandel  
Norma Mandel, Ph.D.  
Sandra & Michael  
Mandel  
Carol & Nick  
Mandelkern  
John J. Manna, Jr.  
Florence & Jeffrey  
Manoff  
Diana Marino  
Peter Marino  
Jessica & Victor  
Marquez  
Kayla Martin  
Imelda Martinez  
Fran Marton, LCSW  
Mary Marzolla  
Dorothy Masch  
Jessica Masciovecchio  
Kathy & Scott Mason  
Nadine Mastandrea  
Golde Math  
Veronica McAvoy  
Catherine McCabe  
Lenora McCabe  
Ellen & Terry McCabe  
Corinne McCall  
Mary & John McCarville  
Peggy & Ron  
McCormack  
Winnifred McDonald  
Denise McGinnis  
Yvette McLarty





*Pictured, L-R:  
Row 1: Jean Marie Connolly, Raymond Hegarty; Jessica Langer, Ben Yassky, Gloria Steinem, Alexandra Natale and Juliana Perciavalle; Roberta Zahl, Lorraine Bracco; Pat Carroll; NY State Assemblywoman Ellen Jaffee; Jerome and Simona Chazen; Carolyn Fish, Esmeralda Diaz Cameron; Carolyn Fish, Joe Allen*



*Row 2: Sandy, Glen, and Michael Mandel; Chair of the Rockland County Legislature Harriet Cornell; Barbara Rein, Steven and Paula Abel, Rich Rein; Rockland County Executive C. Scott Vanderhoef; Dr. Tina Stanford; Elisabeth Voigt, Ellen Burstyn; Sue Rutledge, Martha Roth, Bill Irwin; James Fagan, Maria Luisa Whittingham; Lynn Sheinkin, Joan Balfour*

*Photos by George Pejoves*

- |                                       |                                      |                                       |                              |                           |                                   |                                    |                                   |
|---------------------------------------|--------------------------------------|---------------------------------------|------------------------------|---------------------------|-----------------------------------|------------------------------------|-----------------------------------|
| Margaret McLaughlin & Dr. Burt Pepper | Jessica Nathanson Pearl Tabak Natter | Alison & David Place                  | Jean Roemer                  | Joan Schafer              | Joan Silvestri                    | Elizabeth Teehan                   | Robyn Weiss                       |
| Adrian McLeod, Jr.                    | The Honorable William                | Sandra Platzman                       | Francesca Rogo               | Sarah Gossage             | Kristina Silvestry                | Leontine Temsky                    | Hon. Jennifer Laird               |
| Cindy McMurtrie                       | Honorabile William & Bonnie Nelson   | Mitchell Polack                       | Dan Rohtbart                 | Schlesinger               | Isabel & Myron Simon              | Inger Terzakis & Dr. John Terzakis | White                             |
| Pamela McNair                         | Joan Neumann                         | Michael Ponella                       | Dan Roman                    | Elaine Schloss            | Elaine & Samuel Simon             | Susan & Jay Theise                 | Joan Whitman                      |
| Jessica McNERney                      | Rhonda Newman                        | Helen & Joseph Pont                   | John Rose                    | Diane Schneider           | Melanie Simonson                  | Susan & Thomas                     | Amy Whol                          |
| Stephanie & Howard Meiner             | Harriet H. Nicol                     | Christina Pratt                       | Gail & Michael Rosen         | Susan & Sheldon Schneider | Beatrice Slamowitz                | Debra Thomas                       | Debra Thomas                      |
| Alina Melendez                        | Meredith Nicolich                    | Frances Pratt                         | Jennifer & Stuart Rosen      | Craig Schreiber           | Judy & Marty Small                | Olivia Thomas                      | Susan Wickes                      |
| Marian Mellin                         | Loretta Nordon                       | Julie Prevost                         | Karen Rosen                  | Gail & Peter Schrupf      | Barbara Smith                     | Patrick Thomas                     | Frank Wilkinson                   |
| Roberta & Fred Mendelsohn             | Lynn O'Connor                        | Betsy Proper                          | Rosenda Rosen                | Linda Schultz             | Hon. Rolf Thorsen                 | Hon. Rolf Thorsen                  | Cindy & Richard Williams          |
| Leela Menu                            | Diane O'Doherty                      | Patrice & A. Jon Prusmack             | Rosend Rosen                 | Sue Smith                 | Carol Tieman                      | Michelle Timothee                  | Carol Willinger                   |
| Lois Mergentime                       | Ann O'Malley                         | Nancy A Pupino                        | Phyllis & Harry Rosenthal    | Susan Sockin              | Debra & Russell Tobe              | Debra & Russell Tobe               | Susanna & Thomas Willingham       |
| Muriel & Julius Merl                  | Ruben Ortiz, Jr.                     | JoEllen & Marvin Putter               | Enid Ross                    | Terri Solomon             | Jane & Stephen Towler             | Maggie Trainor                     | Fran Wolfson-Keegan               |
| Laura Mevlat                          | Sherrell Osman                       | Jeanne Quaille                        | Robert Ross & Vicki Schwartz | Charlotte Sorger          | Aude-Claire Tremblay              | Maria Souto                        | Harriet & Ken Wollenberg          |
| Shari Meyer                           | Marlene & Gene Ostertag              | Vince Quiros                          | Michelle Rossignol           | Marilyn Southren          | Irene Tricano                     | Kristine Sova                      | Wylene Branton Wood               |
| Allison & Steve Meyerson              | Nancy & John O'Sullivan              | Donna Rabinowitz                      | Diane Rosuck                 | Maria Souto               | Ann Trudell                       | Ilisa Spatz                        | Hon. Scott B. Ugell               |
| Jean Mian                             | Jane Price Osuna & Frank Osuna       | Robin Rader                           | Victoria Scimeca             | Kristine Sova             | Claudia Uccellani                 | Emily Speziel                      | Annamarie & Bob Uhl               |
| Karen & Al Michalowski                | Hana Oungmann                        | Julianne & Dr. Frederico Ramos        | Sandra Sciortino, Esq.       | Emily Speziel             | Hon. Scott B. Ugell               | Rochelle Spooner                   | Isabel Valenzuela                 |
| Margot Milfin                         | Monika Paas                          | Linie Chang Rand & Joseph Rand        | Lidia Segal                  | Rochelle Spooner          | Annamarie & Bob Uhl               | Elizabeth Squillace                | Isabel Valenzuela                 |
| Brendan Milburn                       | Elaine Padilla                       | Cindy & Frank Raphael                 | Laura & Peter Segall         | Elizabeth Squillace       | Isabel Valenzuela                 | Teehan                             | Hon. C. Scott Vanderhoef          |
| Erin Miller                           | Donna C. Pafumi                      | Sydney Ratnow & Steven Ratnow, Ph.D.  | Deborah Seidenberg           | Sandra Staggwhite         | Hon. C. Scott Vanderhoef          | Tina Stanford                      | Donna Vetere                      |
| Marta Miller                          | Melalree Palchoudhuri                | Bonnie Ray                            | Sydney Sekine                | Tina Stanford             | Donna Vetere                      | Tina Stanford                      | Paulette Viana                    |
| Helene Miller-Paladini                | Elaine Padilla                       | Carolyne Reay                         | Sylvia & Raymond Seltzer     | Deborah Seidenberg        | Paulette Viana                    | Donna Vetere                       | Gerri Viant                       |
| Melissa Mirande                       | Donna C. Pafumi                      | Carolyne Reay                         | Deborah Seidenberg           | Sydney Sekine             | Gerri Viant                       | Donna Vetere                       | Sally Virzi                       |
| Geraldine Miras                       | Manalree Palchoudhuri                | Mark Jacobs                           | Sydney Sekine                | Sylvia & Raymond Seltzer  | Sally Virzi                       | Donna Vetere                       | Susan Vitulli                     |
| Marie Mirville                        | Elaine Padilla                       | Eugene Reese                          | Sylvia & Raymond Seltzer     | Sylvia & Raymond Seltzer  | Susan Vitulli                     | Donna Vetere                       | Rhea Vogel                        |
| Joan E. Moffett                       | Donna C. Pafumi                      | Debbie Reich-Goldberg & Josh Goldberg | Sylvia & Raymond Seltzer     | Sylvia & Raymond Seltzer  | Rhea Vogel                        | Donna Vetere                       | Elisabeth & Richard Voigt         |
| Ruth Molana                           | Manalree Palchoudhuri                | Richard & Barbara Rein                | Sylvia & Raymond Seltzer     | Sylvia & Raymond Seltzer  | Elisabeth & Richard Voigt         | Donna Vetere                       | Diane & Peter Voletsky            |
| June & Alan H. Molof                  | Elaine Padilla                       | Frances Reinstein                     | Sylvia & Raymond Seltzer     | Sylvia & Raymond Seltzer  | Diane & Peter Voletsky            | Donna Vetere                       | Nadine Wagner                     |
| Nancy Moore                           | Donna C. Pafumi                      | Roberta Reinsu                        | Sylvia & Raymond Seltzer     | Sylvia & Raymond Seltzer  | Nadine Wagner                     | Donna Vetere                       | Ruth Wagner                       |
| Robin Mooring                         | Manalree Palchoudhuri                | Ellen & Howard Reiss                  | Sylvia & Raymond Seltzer     | Sylvia & Raymond Seltzer  | Ruth Wagner                       | Donna Vetere                       | Bonita-Marne Wale                 |
| Jane Moreno                           | Elaine Padilla                       | Evan Reiss                            | Sylvia & Raymond Seltzer     | Sylvia & Raymond Seltzer  | Bonita-Marne Wale                 | Donna Vetere                       | Commissioner Mary Ann Walsh-Tozer |
| Cheryl Morris                         | Donna C. Pafumi                      | Arlene Remington                      | Sylvia & Raymond Seltzer     | Sylvia & Raymond Seltzer  | Commissioner Mary Ann Walsh-Tozer | Donna Vetere                       | Sheretta Walthall                 |
| Margaret Morris                       | Manalree Palchoudhuri                | Rex Reynolds                          | Sylvia & Raymond Seltzer     | Sylvia & Raymond Seltzer  | Sheretta Walthall                 | Donna Vetere                       | Ellen & Mark Warner               |
| Nancy Moskowitz & Thomas Keegan       | Elaine Padilla                       | Marian & Michael Rhein                | Sylvia & Raymond Seltzer     | Sylvia & Raymond Seltzer  | Ellen & Mark Warner               | Donna Vetere                       | Dr. Melissa & Nat Wasserstein     |
| Sarah Moss                            | Donna C. Pafumi                      | Martha Rhue                           | Sylvia & Raymond Seltzer     | Sylvia & Raymond Seltzer  | Dr. Melissa & Nat Wasserstein     | Donna Vetere                       | Danielle & Dr. Matthew Watson     |
| Linda Pappalardo & John Riveaux       | Manalree Palchoudhuri                | Ellen Rich                            | Sylvia & Raymond Seltzer     | Sylvia & Raymond Seltzer  | Danielle & Dr. Matthew Watson     | Donna Vetere                       | Bernice Webb                      |
| Nancy & Bruce Muldoon                 | Elaine Padilla                       | Murray Richman                        | Sylvia & Raymond Seltzer     | Sylvia & Raymond Seltzer  | Bernice Webb                      | Donna Vetere                       | Nancy Weber                       |
| Roberta Muldoon                       | Donna C. Pafumi                      | Katherine Rife                        | Sylvia & Raymond Seltzer     | Sylvia & Raymond Seltzer  | Nancy Weber                       | Donna Vetere                       | Lori Swern                        |
| George Mulligan                       | Manalree Palchoudhuri                | Erin Riley                            | Sylvia & Raymond Seltzer     | Sylvia & Raymond Seltzer  | Lori Swern                        | Donna Vetere                       | Marci Swern                       |
| Maria Muni                            | Elaine Padilla                       | Jo Ripa                               | Sylvia & Raymond Seltzer     | Sylvia & Raymond Seltzer  | Marci Swern                       | Donna Vetere                       | Rachel Tanguay-McGuane, Esq.      |
| Gerri Myer                            | Donna C. Pafumi                      | Stephanie & Jonathan Rippes           | Sylvia & Raymond Seltzer     | Sylvia & Raymond Seltzer  | Rachel Tanguay-McGuane, Esq.      | Donna Vetere                       | Patricia Tapen                    |
| Rabia & Paul Nagin                    | Manalree Palchoudhuri                | Marysue Robbins                       | Sylvia & Raymond Seltzer     | Sylvia & Raymond Seltzer  | Patricia Tapen                    | Donna Vetere                       | Frances Tarson                    |
| Helane Naiman                         | Elaine Padilla                       | Kevin Roberts & Melanie Hanna         | Sylvia & Raymond Seltzer     | Sylvia & Raymond Seltzer  | Frances Tarson                    | Donna Vetere                       | Jaime & David Tashjian            |
| Dharani Narasimhan                    | Donna C. Pafumi                      | Leslie & Juan Rocha                   | Sylvia & Raymond Seltzer     | Sylvia & Raymond Seltzer  | Jaime & David Tashjian            | Donna Vetere                       | Elaine Taubin                     |
| Sharani Girish                        | Manalree Palchoudhuri                | Antonia Rodriguez                     | Sylvia & Raymond Seltzer     | Sylvia & Raymond Seltzer  | Elaine Taubin                     | Donna Vetere                       | Kathy Taulton                     |
| Narasimhan                            | Elaine Padilla                       | Marta Rodriguez                       | Sylvia & Raymond Seltzer     | Sylvia & Raymond Seltzer  | Kathy Taulton                     | Donna Vetere                       | Any Taylor                        |
| Sandy & Aruna Narayanan               | Donna C. Pafumi                      | Vickie Rodriguez                      | Sylvia & Raymond Seltzer     | Sylvia & Raymond Seltzer  | Any Taylor                        | Donna Vetere                       | Elissa Tchernooff                 |

**BOARD OF DIRECTORS**

- |  |                    |                 |
|--|--------------------|-----------------|
| Michael Mandel, <i>President</i>         | Jill Kaliff        | JoEllen Putter  |
| Kimberly Campbell, <i>Vice President</i> | Marilyn Kaskel     | Marian Rhein    |
| Billie Cronin, <i>Secretary</i>          | Deborah Kingsley   | Laura Segall    |
| Richard D. Rein, <i>Treasurer</i>        | Patsy Lisak        | Anne Shapiro    |
|  | John J. Manna, Jr. | Diane Sussman   |
|  | Cynthia McMurtrie  | Elisabeth Voigt |
|  | Kathy Perrotte     | Roberta Zahl    |
| Steve Abel                               |                    |                 |
| Janet Brooks                             |                    |                 |
| Cynthia Diamond                          |                    |                 |
| Ronnie Drachman                          |                    |                 |
| Roselyn Fields                           |                    |                 |
| S. Lisa Hayes                            |                    |                 |
| Bijal Jani                               |                    |                 |

**ADVISORY COUNCIL**

- |                             |                                 |
|-----------------------------|---------------------------------|
| Lorraine Bracco             | Laurie & Walter Karopczyk       |
| Ellen Burstyn               | Sandy & Michael Mandel          |
| Pat Carroll                 | John J. Manna, Jr.              |
| Simona & Jerome A. Chazen   | Ellen & Terrance McCabe         |
| Joe Ehrmann                 | Judy Ruben-Jacobs & Mark Jacobs |
| Linda & Jonathan Ewig       | Alyssa & Howard Shams           |
| S. Lisa Hayes & Janet Prata | Elisabeth & Richard Voigt       |
| Rita Harvey & Neil Berg     | Gail & Ronald Walerstein        |

**STAFF & CONSULTANTS**

- |                  |                    |                         |
|------------------|--------------------|-------------------------|
| Melissa Almenas  | Arlene Gordon      | Linda President         |
| Kathy Bookman    | Jenny Guzman       | Betsy Proper            |
| Maria Ceci       | Barbara Harrington | Ivette Perrell          |
| Mary Clay        | Nicole Harris      | Marlene Rodriguez       |
| Wendy Cruz       | Margie Hayes       | Elizabeth Santiago      |
| Laure Cunningham | Tara Healy         | Marie Simmons           |
| Lyn Davidson     | Kavita Kunte       | Belkis Soriano          |
| Jan Deegan       | Helga Lamarche     | Julika von Stackelberg  |
| Venesia Defrank  | Anne Lherisson     | Lauren Steinfeld        |
| Nancy Donoghue   | Annquette Mackey   | Dilcia M. Suazo         |
| Sonia Elsevfy    | Judy McDermott     | Anais Surkin            |
| Marie Emhardt    | Milagros Morote    |                         |
| Vivian England   | Claudette Morris   |                         |
| Laila Eugene     | Mala Palchoudhuri  | <b>Consultants</b>      |
| Carolyn Fish     | Jomaira Perez      | Maggie Cann             |
| Johanna Franjul  | Candy Pittari      | Michael Micinowski      |
| Julie Gamache    | Laura Plotkin      | Claudia Olave-Guillermo |
| Lynn Goldblatt   | Kiera Pollock      | Jerry Schulman          |

NONPROFIT ORG.  
US POSTAGE  
**PAID**  
MONSEY, NY  
PERMIT #63



- Domestic Violence and Sexual Assault Services
  - Strategies to End Gender-Based Violence
  - Crime Victims Services

**FORMERLY ROCKLAND FAMILY SHELTER**

**OUR NAME HAS CHANGED. OUR MISSION REMAINS THE SAME.**



Like us on Facebook  
*Center for Safety & Change*



Follow us on Twitter  
*@Center4SC*



Connect with us on LinkedIn  
*Center for Safety & Change*



**Visit us and please donate at [www.centerforsafetyandchange.org](http://www.centerforsafetyandchange.org)**

## 2013 SPECIAL EVENTS

### **Annual Designer Fashion & Accessories Sale - Preview**

June 3 ■ The Hudson House of Nyack

### **18th Annual Designer Fashion & Accessory Sale**

June 12 & 13 ■ Helen Hayes Performing Arts Studio

### **26th Annual Women's Distance Festival – 5K**

July 13 ■ Rockland Lake State Park

### **34th Annual Harvest Auction**

November 10 ■ New York Country Club

### **8th Annual Simona & Jerome Chazen**

**Business Awards Luncheon**

December 6 ■ Restaurant X

### **Barnes & Noble Gift Wrapping**

May, June & December ■ Palisades Mall

**9 Johnsons Lane, New City, NY 10956 • 845-634-3391 • Hotline: 845-634-3344**